

HIV/AIDS IN NEWTON COUNTY, MISSISSIPPI

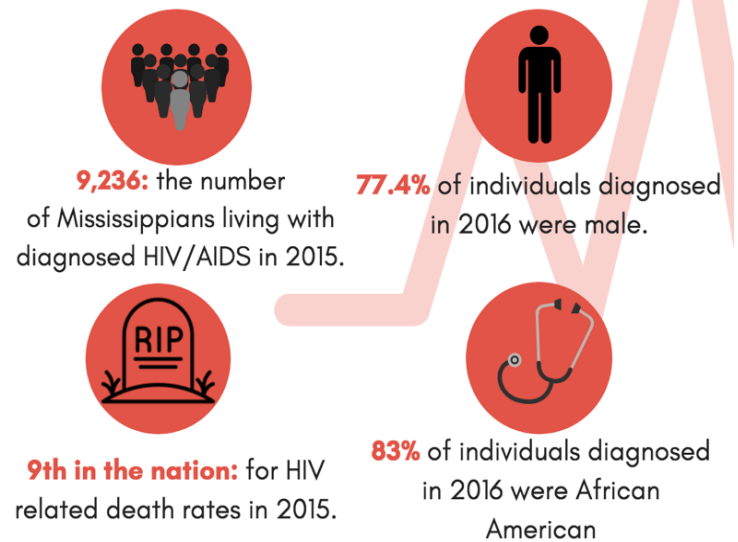
STATEWIDE OVERVIEW

Nationally, Mississippi ranked:¹

- **9th** for HIV death rates in 2015
 - Rate of 8.3 deaths per 100,000 people
 - 1.43 times higher than the national rate
- **11th** for HIV prevalence rates in 2015
 - Rate of 374 people living with an HIV diagnosis per 100,000 people
 - 1.03 times higher than the national rate

Racial disparities: HIV prevalence

- Black/African American rate per 100,000: **750.8**
- Hispanic/Latino rate per 100,000: **451.7**
- White rate per 100,000: **122.5**

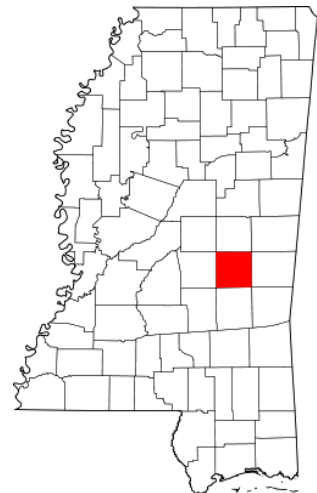


COUNTY: NEWTON

Ranking among counties in Mississippi:²

- **31st** in HIV prevalence rate in the state in 2015
 - **Rate of 288.0** people living with an HIV diagnosis per 100,000 people

Number of people living with an HIV diagnosis in Newton County in 2015: **51**



¹ CDC Atlas. <https://www.cdc.gov/nchstp/atlas/index.htm>.

² CDC Atlas. <https://gis.cdc.gov/grasp/nchhstpatlas/tables.html>