

# HIV/AIDS IN LAUDERDALE COUNTY, MISSISSIPPI

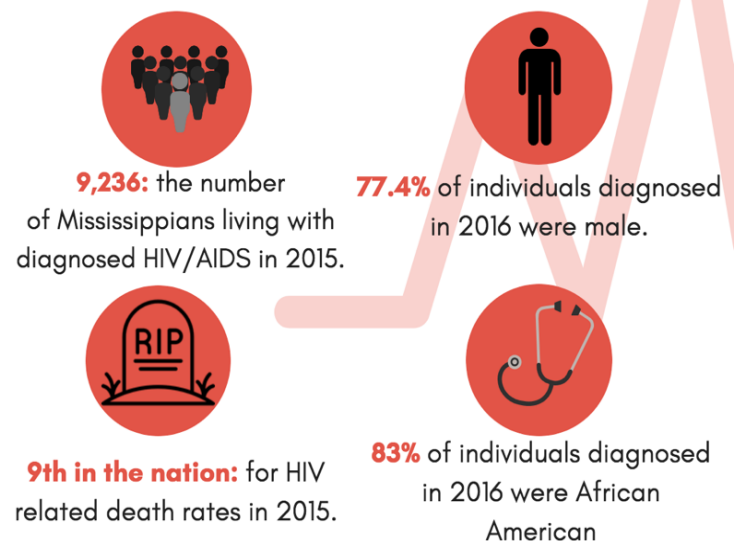
## STATEWIDE OVERVIEW

Nationally, Mississippi ranked:<sup>1</sup>

- **9<sup>th</sup>** for HIV death rates in 2015
  - Rate of 8.3 deaths per 100,000 people
  - 1.43 times higher than the national rate
- **11<sup>th</sup>** for HIV prevalence rates in 2015
  - Rate of 374 people living with an HIV diagnosis per 100,000 people
  - 1.03 times higher than the national rate

Racial disparities: HIV prevalence

- Black/African American rate per 100,000: **750.8**
- Hispanic/Latino rate per 100,000: **451.7**
- White rate per 100,000: **122.5**



## COUNTY: LAUDERDALE

Ranking among counties in Mississippi:<sup>2</sup>

- **21<sup>st</sup>** in HIV prevalence rate in the state in 2015
  - **Rate of 387.8** people living with an HIV diagnosis per 100,000 people

Number of people living with an HIV diagnosis in Lauderdale County in 2015: **252**



<sup>1</sup> CDC Atlas. <https://www.cdc.gov/nchstp/atlas/index.htm>.

<sup>2</sup> CDC Atlas. <https://gis.cdc.gov/grasp/nchhstpatlas/tables.html>